

# LED lights - for streets and decorative purposes



Energy in the right dimension



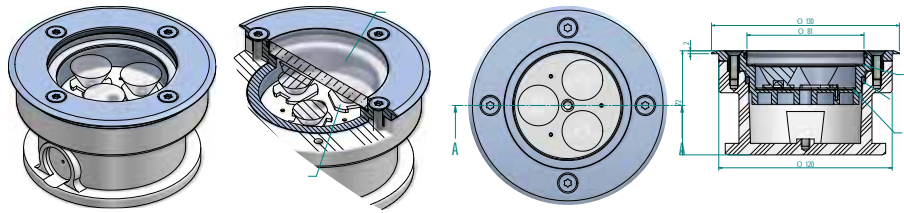
**light in suitable concentration**

## VisuLED

With a surface made of chrome steel and hardened glass (diffused or transparent), the versatile VisuLED is available in different executions: with scattered or focused ray of light and with round or square cover.

You are able to choose from three different types of optics if you decide to apply the version with the focused ray: 8°, 26° or 45° or without optics (diffused). There is no optic implemented in the version with diffused light.

Available LED colours: white, red, green, blue or RGB (red-green-blue).



Perfect for:

- lighting of paths
- marking underground car parks, houses and gardens
- city planning



- **nominal voltage:** 24VDC (voltage range 20-28VDC)
- **current demand:** 300mA @24VDC
- **LED:** 3 PowerLED 2,4W (total 7,2W) at the plain execution; 2 PowerLED 2,5W (total 5W) at the RGB execution
- **degree of protection:** IP68
- **protection class:** III

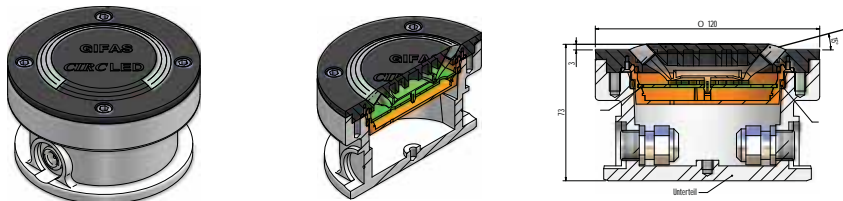
## CircLED

With her 16 LED's which are spread circular over 270°, the CircLED was specially customised to illuminate a roundabout really efficient. The lid, which is made of special plastic, is drivable and integrates itself in the pavement or some other mounting areas perfectly.

Available LED colours: white, yellow, red, green, blue or orange



**light spreads over 270°**



- **nominal voltage:** 24VDC (voltage range 16-42VDC)
- **current demand:** 120mA @24VDC
- **LED:** 16 x 5 mm
- **degree of protection:** IP68
- **protection class:** III



Perfect for:

- roundabouts
- lighting of paths
- design element

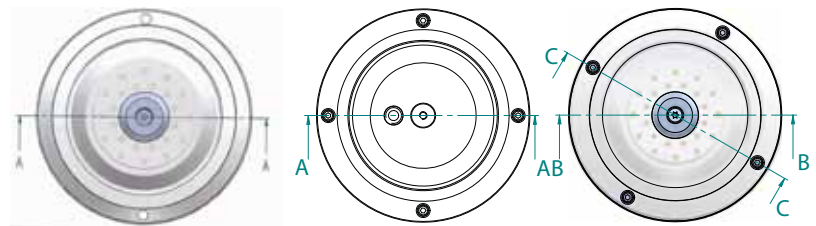


## ToppLED

The ToppLED complies the demands on efficiency and aesthetics in one go: the 24 LED's are arranged symmetrically, generate their light horizontally and allow effective irradiation designs in urban areas, fountains, swimming pools, shopping malls etc. The cover made of transparent Plexiglas® with a nano-coated surface offers highest protection on climatic conditions.

Available LED colours: white, yellow, red, green, blue, orange or RGB.

**efficient and decorative**



Perfect for:

- light accents in gardens and parks
- wells/fountains
- swimming pools



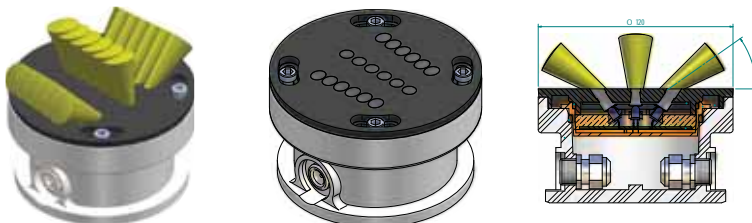
- **nominal voltage:** 24VDC
- (voltage range 16-42VDC)
- **current demand:** 140mA
- **LED:** 24 x 5 mm
- **degree of protection:** IP68
- **protection class:** III

## StopLED

The StopLED was especially developed for an application on platforms or underground railroads, where they alert on approaching trains. The inclination angle of the lights (with two rows at 6 LED's in an angle of 35°/5° in direction and one row in the middle of the angle of 75°) was conceived for the guidance of travellers - but without dazzling the engine driver!

Connected with a control unit, the StopLED sets the direction of travel with alternate lights.

Available LED colours: amber, blue or white.



**platform lighting**

- **nominal voltage:** 24VDC
- (voltage range 16-48VDC)
- **current demand:** 60mA
- **LED:** 24 x 5 mm
- **degree of protection:** IP68
- **protection class:** III



Perfect for:

- pavements
- platforms
- places with lots of traffic



Based on the wealth of experience of GIFAS, additionally for the application in tunnels:

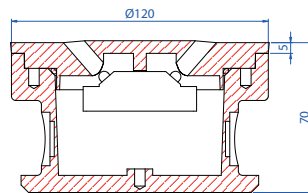


## FlatLED

The pattern FlatLED is our answer to the increasing demand on intelligent carriageway-signalisation, which is efficient as well as economic.

The lid made of special plastic is completely embedded and drivable. Because of the simple assembly, the FlatLED is the perfect solution to accentuate pedestrian passages, marking of carriageways and centre stripes on the in- and outside.

Available LED colours: white, yellow, red, green, blue or orange (standard version); white, orange and yellow (BAST version).



Some of the models of the FlatLED are certified by BAST (German Federal Highway Research Institute).



**drivable**

Perfect for:

- tunnels
- subways
- pedestrian cross-overs



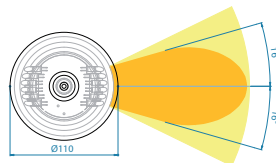
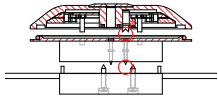
- nominal voltage: 24VDC (voltage range 16-40VDC)
- current demand: 80mA
- LED: 12 x 5 mm
- degree of protection: IP68
- protection class: III

## MarkLED

The unit MarkLED is scheduled for the placing on the roadside and related to a system of current collectors. Elegant and fine but with large light potential, MarkLED's are highly efficient and require a minimal maintenance at once.

The cover made of transparent Plexiglas® with a nano-coated surface offers highest protection on climatic conditions and contamination.

Available LED colours: white, yellow, red and blue.



- nominal voltage: 24VDC (voltage range 16-40VDC)
- current demand: 40mA (white) 60mA (yellow, red and blue)
- LED: 12 x 5 mm
- degree of protection: IP69K
- protection class: III



**efficient and economical**

Perfect for:

- road tunnels
- railway tunnels
- pedestrian areas

Further informations and technical data sheets are available on demand

GIFAS-ELECTRIC GmbH phone +41 71 886 44 44  
 Dietrichstrasse 2 fax +41 71 886 44 49  
 Postfach 275 www.gifas.ch  
 CH-9424 Rheineck info@gifas.ch

